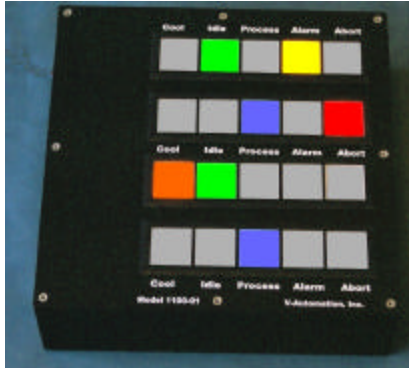


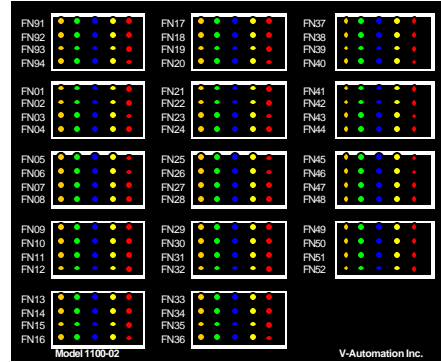
Status Display Panel For Horizontal Furnace Stack

Model 1100

Local Panel (13"X13"X 4")



Remote Panel



- **Status Indicator Light for each Tube, Four Tubes per Stack.**
- **Large Indicator Lights (1.6"X1.6") visible from a distance.**
- **Flashing Indicator Lights for Abort and Alarm Status**
- **Easy to install.**
- **Five color-coded indicators: Abort, Alarm, In-Process, Idle and Cool-Down.**
- **Easy to interface with Tube Computer.**
- **Two wire serial communication (RS 485 Daisy Chain) connection to Remote Panel.**
- **Local Panel can be used independently and does not require Remote Panel.**
- **Remote Panel may be installed at tech area.**
- **Replaces or in addition to Light Towers.**
- **Can be customized for the application.**

The Light Status Panel is designed to show the status of the equipment. This panel displays the status of a furnace stack with four process tubes. It is connected to the Process Tube Computer I/O (Relay) module. It displays the Status as 'COOL DOWN', 'IDLE', 'IN PROCESS', 'ALARM', and 'ABORT'.

The 'Cool' indicator light has an orange lens. Whenever the boats are in cool down mode, the light is activated using the recipe from the process tube computer. The 'Idle' indicator light has a green lens and is activated by the Process tube computer whenever the process is successfully completed. The load is ready to be replaced by operator. The 'Process' indicator light has a blue lens and is activated by the process tube computer whenever the process is running. The 'Alarm' indicator has a yellow lens and it will flash whenever the process is in alarm condition. The alarm input is activated and deactivated by the process computer. The 'Abort' indicator has a red lens and it will flash whenever the process is in abort condition. The abort input is activated and deactivated by the process computer.

The Local Status Panel may be connected to the Remote Status Panel by RS485 communication cable. It is a two-conductor cable. The Remote Panel can communicate with up to 127 pieces of equipment. All of the Local panels can be connected by daisy chain connection configuration. The Remote Status Panel is the Master controller and initiates the communication. The Local Status Panel controller is configured as a Slave controller and responds to the Remote status Panel. The Local Status Panel has a Physical address and each process tube has a Logical address. The protocol supports the 127 physical addresses and 16 logical addresses. The communication is in current loop mode (RS 422). It has excellent noise immunity. The distance between Local and remote panels can be couple of miles. It can also support the multiple remote status panels.

V-AUTOMATION, Inc.

P. O. Box 93715

SOUTHLAKE, TEXAS 76092

TEL: (817) 488-3245 FAX: (817) 488-3245

Email: vautomation@prodigy.net