



---

## Back Plate Quotation Specification

---

### CUSTOMER INFORMATION

Customer Name: \_\_\_\_\_  
Company Name: \_\_\_\_\_  
Company Address: \_\_\_\_\_  
Contact Phone Number: \_\_\_\_\_  
Contact Fax Number: \_\_\_\_\_  
Contact Email Address: \_\_\_\_\_

### BASIC FURNACE INFORMATION

Furnace Type: \_\_\_\_\_  
Wafer Size: \_\_\_\_\_  
Quartz Tube Size (ID/OD in MM): \_\_\_\_\_  
Quartz Liner Size (ID/OD in MM): \_\_\_\_\_  
Process Type: \_\_\_\_\_  
Qty of Back Plates to be Quoted: \_\_\_\_\_

### VACUUM FLANGE INFORMATION

Flange Part Number: \_\_\_\_\_  
Flange Manufacturer: \_\_\_\_\_  
Basic Flange Size (ID/OD in MM): \_\_\_\_\_

Below you will find a basic drawing for a back plate used on a rear vacuum flange. Please make a simple sketch of components on your current or existing back plate that you would like us to quote or duplicate. The more detail you are able to give us, the faster we can determine your requirements and forward your quotation.

Vacuum ports are available in KF, ISO, and Ball Joint configurations. Profile TC, Gas Inlet/Injector fittings are available in Swagelok VCR®, VCO®, Ultra-Torr®, tube, pipe seal, ball joint, and ball socket fittings.

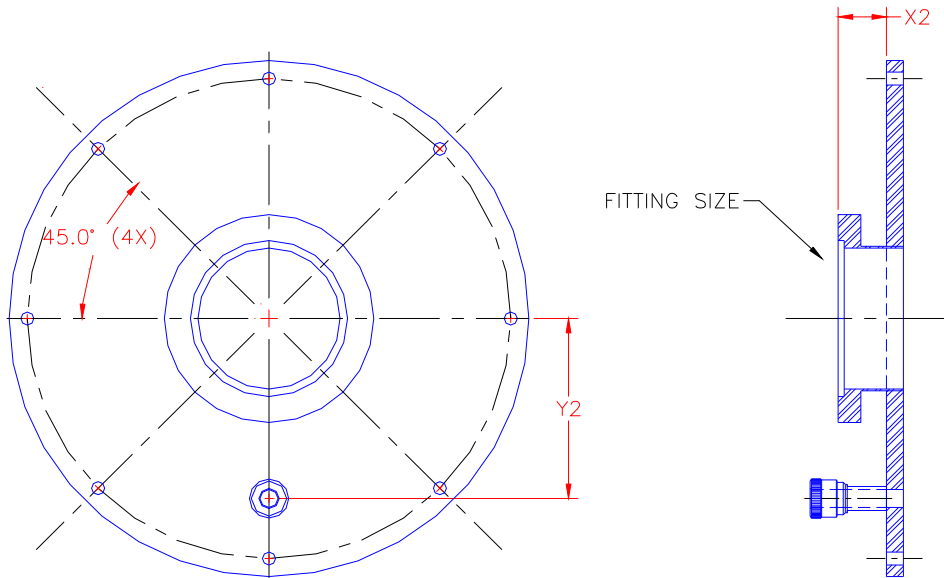


4040 West Royal Lane, STE 130  
Irving, Texas 75063  
Phone: 972-915-6525 Fax: 972-915-6599  
Email: [Invac.Systems@tx.rr.com](mailto:Invac.Systems@tx.rr.com)  
[www.invacsystems.com](http://www.invacsystems.com)

## Back Plate Quotation Specification

### BACK PLATE DRAWING

Sketch Ultra-Torr Fittings, Water lines, Gas Lines, etc...



### BACK PLATE SPECIFICATION

Vacuum Port Size:		X2:		
Injector/Profile TC Port #1:	Y2:	Size:		
Injector/Profile TC Port #2:	Y2:	Size:		
Injector/Profile TC Port #3:	Y2:	Size:		
Angle between Port 1 & 2:				
Angle between Port 2 & 3:				
Other:	Location:	Size:		
Other:	Location:	Size:		
Engrave Process Type:	POLY	POLY-L TEOS	NIT TEOS-L	NIT-L

Please send specification to InVac Systems for review by Engineering. A quote will be forwarded in 3-5 business days upon receipt of specification.